



LEAF PATTERN

TOOLS REQUIRED

- Erasable pencil or masking tape
- Finishing nails, 18 gauge
- Finishing nailer
- Tape measure
- Level
- Mitre saw
- Carpenter's square
- Wood filler
- Caulking
- Caulking gun

MATERIAL REQUIRED

1565 | SQUARE

- Thickness: 1-1/16"
- Width: 1-1/16"
- Length: 96"

ADDITIONAL INFORMATION

- Exterior installation: No
- Type: Jointed pine
- When buying your material, allow about a 10% loss for cuts.

RECOMMENDATIONS

It is strongly recommended that you take the measurements of your wall before beginning in order to adjust your plans and make the calculations necessary to complete your project. You can print this guide and make it your personalized plan, based on your space, so you can determine the quantity as well as the width of your geometric patterns.

TIP

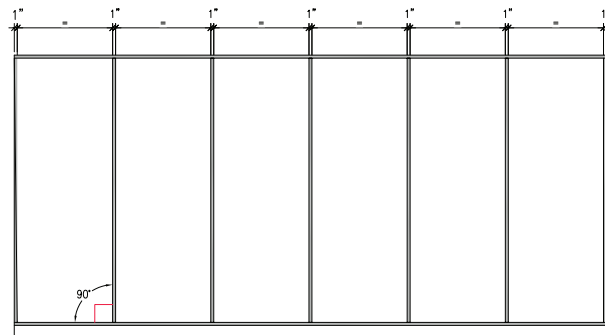
Use an erasable pencil or masking tape to mark the location of the mouldings directly on your wall. If the dimensions of the geometric patterns do not provide the desired effect, adjust your plans. It is also recommended to paint the background of your wall in your desired colour before you begin to create the geometric patterns. Once the mouldings are installed, they can be painted to harmonize your project.



INSTALLATION STEPS

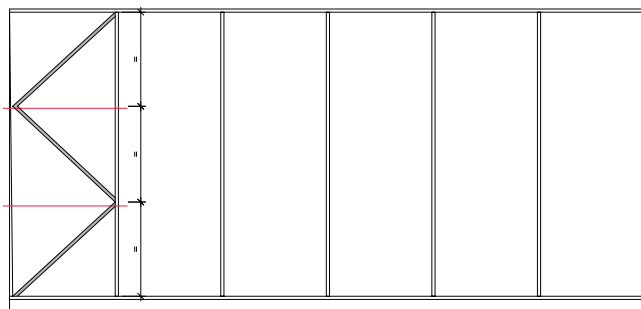
STEP 1: FRAME THE WALL

- Ⓐ Place a moulding horizontally at the bottom of the wall or above your baseboard. Using a finishing nailer, fasten the moulding, making sure it is level. If the moulding does not cover the entire wall, measure the missing space and cut a second piece of moulding to completely cover the span of the wall. Repeat at the top of the wall.
- Ⓑ Measure the entire length of the wall and divide it into the number of sections you want, to locate where the vertical mouldings will go. For example, for an 18 foot wall, there would be a moulding every 3 feet, i.e. 6 equal sections.
- Ⓒ Measure the height between your two horizontal mouldings to locate where they will be placed. Cut the pieces and then fasten the mouldings with the finishing nailer. Make sure you are square with your horizontal mouldings.



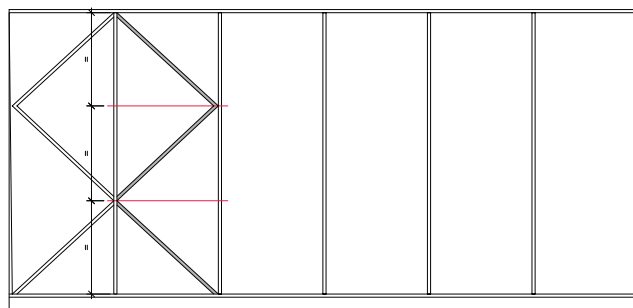
STEP 2: IN THE FIRST SECTION

- Ⓐ Divide the height defined in 1C into 3 equal sections. Using an erasable pencil or masking tape, outline these three sections.
- Ⓑ Measure the length of the first moulding that will be placed at an angle between the two vertical mouldings, at the ends of the boundary defined in step 2A. Ends require a 45 degree cut.
- Ⓒ Using a mitre saw, cut the ends of the moulding at a 45 degree angle, then fasten the moulding to the wall. It is recommended to use a carpenter's square. Repeat, creating a zig-zag to the bottom of this section.



STEP 3: IN THE SECOND SECTION

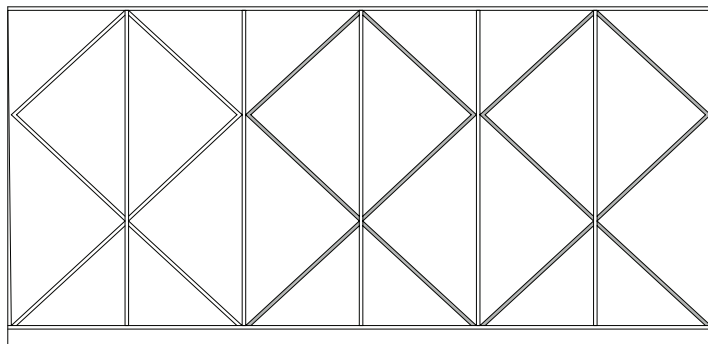
- Ⓐ Always respecting the same section boundaries defined in step 2A, align the new mouldings with those of the previous section to create a mirror effect. Repeat steps 2B and 2C



INSTALLATION STEPS

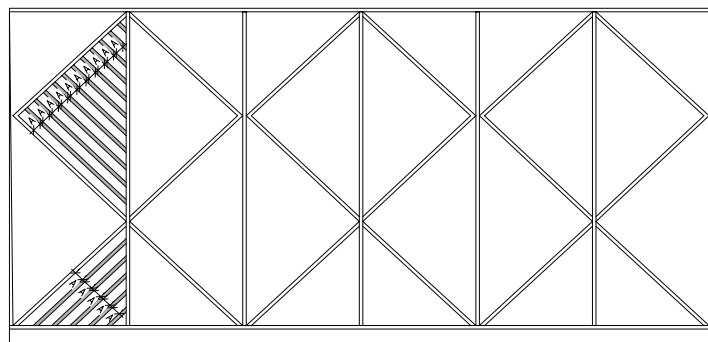
STEP 4: IN THE OTHER SECTIONS

- Ⓐ Repeat steps 2 and 3 in sections 3 through 6.



STEP 5: IN THE FIRST SECTION

- Ⓐ Place the mouldings parallel as shown, leaving an equal space between each moulding. Ends sometimes require a 90 degree cut, sometimes a 45 degree cut.



STEP 6: IN THE OTHER SECTIONS

- Ⓐ Repeat step 5A, always creating a mirror effect to the juxtaposed section. Complete your wall to reproduce the example shown.
- Ⓑ Use wood filler and caulking to conceal imperfections. Let dry, sand lightly and paint the mouldings the same colour as the background wall.

