



REVŌBEAM

TOOLS REQUIRED

- Wood glue
- Caulking gun for construction adhesive
- 18 gauge finishing nails
- Finish nailer
- Mesuring tape
- Level
- Miter saw
- Saw bench
- Stud sensor
- Drill

DIMENSIONS

- Thicknesses: 5-12" and 7-12"
- Widths: 4", 6" and 8"
- Lengths: 96" and 144"

ADDITIONAL INFORMATIONS

- Outdoor installation: No
- Species: Eastern white knotty pine and finger jointed pine white primed
- Mortise kit with reversible boards

WORKING ENVIRONMENT PREPARATION

Faux beam installation should be the last step of a construction or renovation. First allow the wood to acclimatize to the air and the ambient temperature for at least 72 hours prior to installation.

SURFACE PREPARATION

Please note that Faux beam will not correct any apparent or pronounced defects of the wall. It is therefore essential to make sure the wall or surface you are covering is in good condition prior to starting installation. Even out the surface by eliminating any remaining glue, nails, or any other material that could interfere with installation.

INSTALLATION

Make sure you have good natural lighting before starting the project. Faux beam can hide pipes, electric wires or supporting columns.

BEFORE YOU BEGIN

Before installing the product, the installer and/or owner must make sure that the wall complies with the conditions specified in this document. The installer and the buyer are responsible for inspecting the products before installing them. If the installer notices imperfections in product manufacturing or finishing and cannot install the product in an inconspicuous location or eliminate the imperfections, he or she should not install it. Once the product is installed, it is considered to have been accepted by the installer and/or the owner, even if he/she was not present during installation. Customers must make sure the product purchased is suitable for the desired installation.

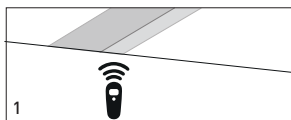
EASY TO INSTALL



FAUX BEAM INSTALLATION STEPS

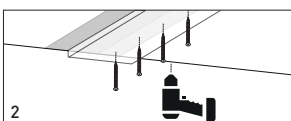
STEP 1

First localize the joist in the ceiling with the help of a stud sensor to determine the position of the faux beam.



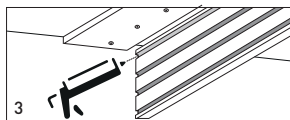
STEP 2

Take one of the two boards that does not have any groove and screw it on the ceiling while making sure it's perfectly leveled and that the narrowest side is toward the ceiling so you can insert the boards on each side.



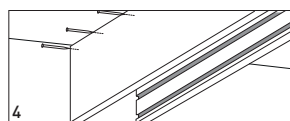
STEP 3

Take one of the two grooved boards and apply a thin layer of wood glue on the inside of the top split. Then, insert it in the board that is already screwed on the ceiling and make sure that the board is well nested. Repeat on the other side.



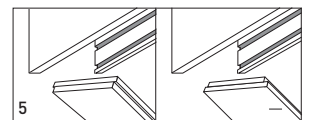
STEP 4

Once both grooved boards are glued, screw them with finishing nails.



STEP 5

Insert the second board that does not have any groove to assemble the beam. You can part both grooved boards outwards to facilitate the insertion.



STEP 6

Nail the bottom board on each side with finishing nails.

