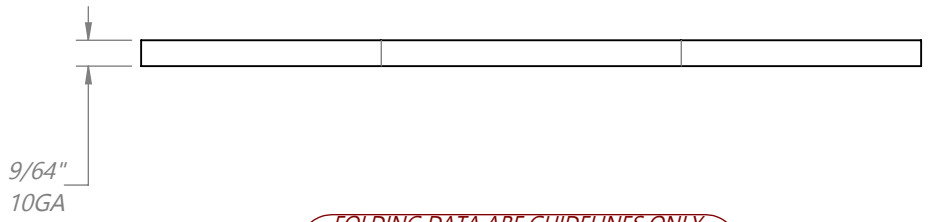
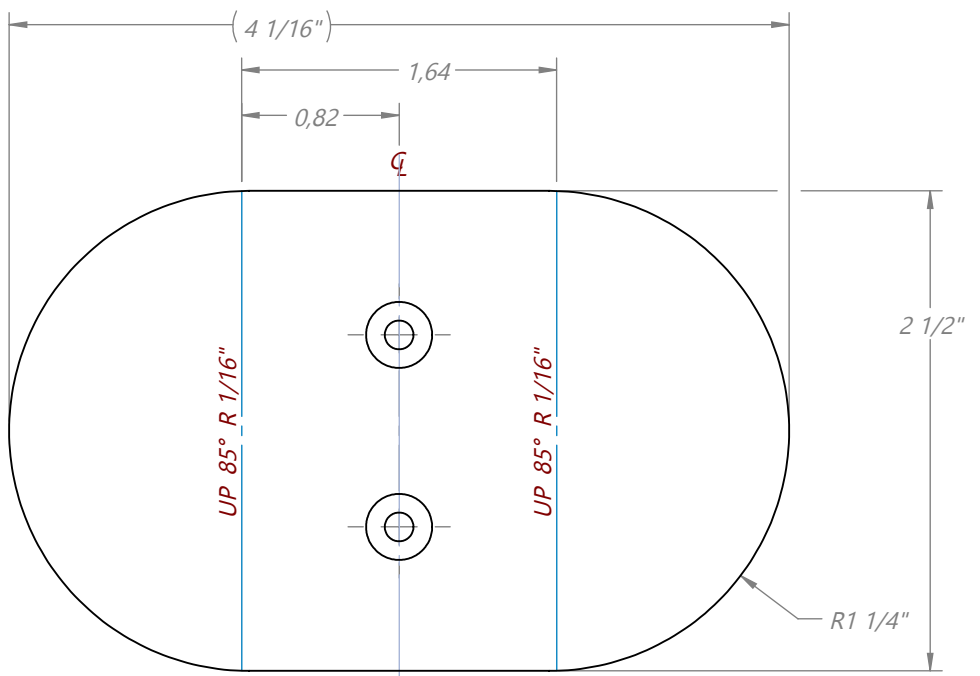


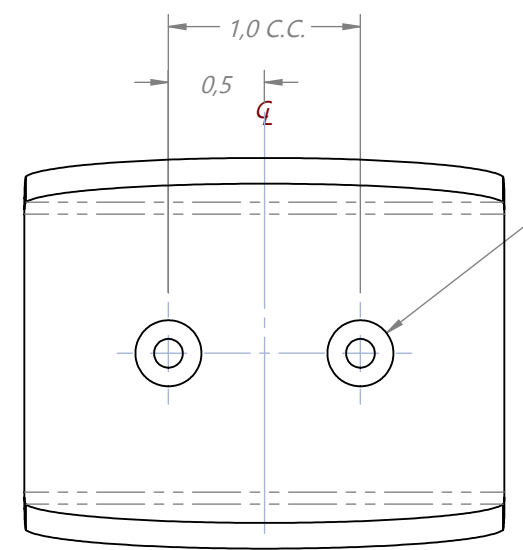
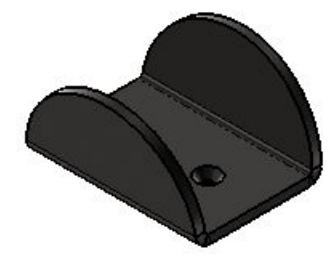
D
C
B
A

UNFOLD SHEET STATE

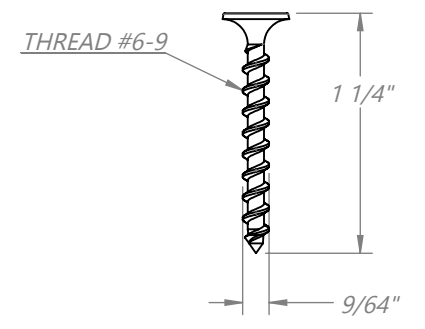
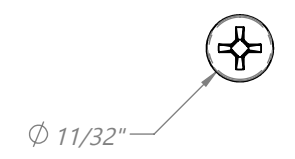
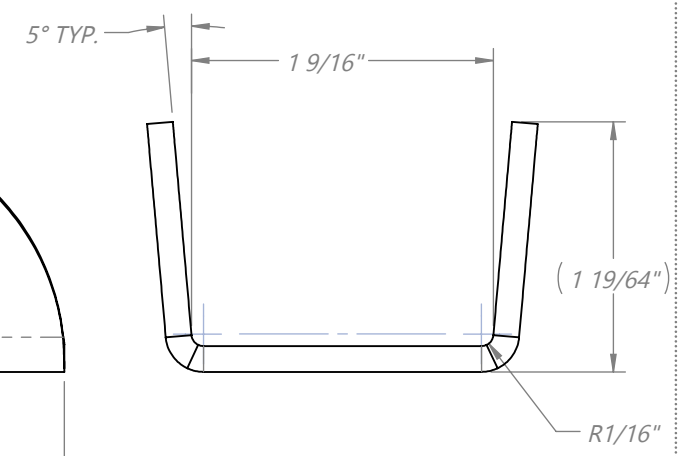
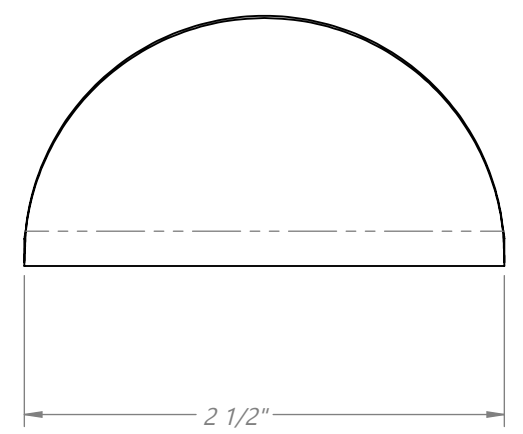


**FOLDING DATA ARE GUIDELINES ONLY.
OTHER VIEWS MUST BE PRIORITIZED.**

NOTE:
TO SEAL IN A BAG ALTOGETHER:
• 1x DOOR C GUIDE
• 2x FLAT HEAD PHILLIPS SOCKET SCREW, #6-9 x 1 1/4" LG, BLACK OXYDE



Φ 11/32" \surd 82°
DRILL 5/32" THROUGH ALL
TYP. 2PL.



D
C
B
A

PLEASE USE THE 3D PART SUBMITTED WITH THIS DRAWING TO PRODUCE: DOOR C GUIDE (SDH)-R00				TOLERANCES (NON-CUMULATIVE) NON-MACHINED DIMENSIONS:		2190, St. RIE, SAINT-ROMULAUD (QUÉBEC) CANADA G9W 8V9 TOLL FREE: 1-800-463-7230 PHONE: 418-334-6661 FAX: 418-334-6662 EMAIL: INFO@METALLIFER.COM WEB: WWW.METALLIFER.COM		NOTICES THIS DRAWING IS AN EXCLUSIVE PROPERTY OF METALLIFER (2009) LTEE AND IT CAN'T BE DIRECTLY OR INDIRECTLY USED BY OTHER MANUFACTURERS AND OTHER INSTITUTIONS WITHOUT A WRITTEN CONSENT OF METALLIFER (2009) LTEE.	
MATERIAL/TREATMENT: GA10 MILD STEEL SHEET		FINISHING: TEXTURED BLACK COATING		AS PER PROCESS, IF NOT SPECIFIED: DRAFT ANGLE: 125µin ROUGHNESS AVERAGE: [3.2µm]		BREAK SHARP CORNERS / DEBURRS		PROJECT: DOOR C GUIDE (SDH) - TB	
ESTIMATED NET WEIGHT: 0.3lbs 0.14kg		QTY/ASSEMBLY: 1		DRAWING TYPE:		MACHINED DIMENSIONS: NOMINAL: ±1/64" [0.40mm] X: ±0.010" [0.25mm] XX: ±0.007" [0.18mm] XXX: ±0.003" [0.08mm]		DRAWN BY: VERIFIED BY: DATE (YEAR-MONTH-DAY): 2014-06-02	
								STATUS: B SCALE: 1:1 PAGE: 7/10	